



Rosemont City Place

Relax in space & harmony near the city



R.C.P.

Rosemont City Place

Relax in space & harmony near the city



A stone's throw away from the City of Hamilton, Rosemont City Place is ideally located. This high quality residential community is less than a five minute walk from shops, offices and restaurants. Convenience is unparalleled as Hamilton offers the best dining, entertainment and shopping the island has to offer.

Just a quick trip from the serene harbour and hustle of Front Street, the spectacular Rosemont City Place boasts the most spacious and elegant residential living in the city of Hamilton. The homes, each with their own private patio, range from approximately 1,440 to 2,100 square feet. These full size homes come with the amenities of a luxury condominium building located in a quiet residential community. Proximity to Hamilton and spacious, roomy homes make Rosemont City Place a unique cosmopolitan living experience.

**FULL SIZE
HOME**
with exceptional
amenities
and value

FOR SALE OR LEASE

Spacious 2 and 3 bedroom homes as large as 2,100 Sq. Ft.

R. C. P.

Building Amenities

- Within 500 meters to the city of Hamilton
- Underground secure parking
- Fitness center / Gym
- Private pool and sun deck
- Spacious open floor plans
- Extra storage closet for each home
- Elevator access
- Secure access with security card system



Unit Amenities

- Spacious 2 and 3 bedroom homes as large as 2,100 Sq. Ft.
- Large private balconies
- Solid wood kitchen cabinetry, granite counter tops
- Appliances – Stainless steel electric range, oven, microwave, refrigerator/freezer and dishwasher
- Plumbing fixtures by Kohler
- Separate laundry room with full size washer and dryer
- Master bedroom with ensuite bath and walk in closets
- Ceiling fan in master bedroom
- Air conditioning and heating
- PVC / aluminium doors & windows double glazed for efficiency
- Pre wired for networking & security
- Cherry or wood tile floors in living room and master bedroom



Rosemont City Place

Relax in space & harmony near the city



Key:

1- Rosemont City Place

2 - City Hall

3 - Royal Bermuda Yacht Club

4 - Miles Market & The Waterfront

5 - Fairmont Hamilton Princess

R.C.P.

NOTE: Plans are not to scale. Furniture and images used for illustrative purposes only. All layouts are subject to change. All details described in this brochure and inserts are for the guidance of potential purchasers or renters and do not constitute an offer or contract. All details herein are subject to change without notice.

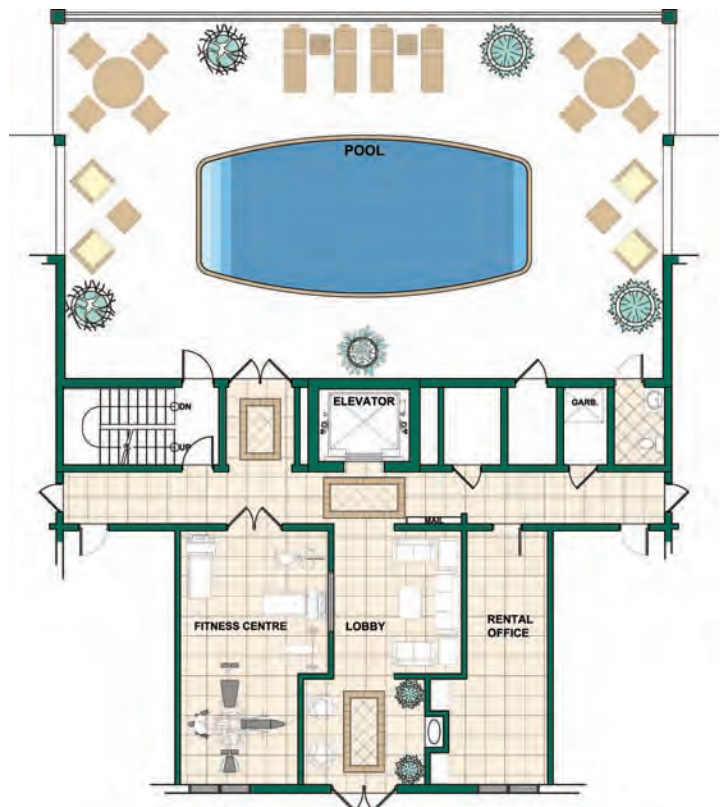
Sole Sales Agent

Coldwell Banker Bermuda Realty
 Brian Maderios - (441) 247 1801
 bmaderios@brcl.bm



Project Manager

WhiteCross Development Limited
 T: 441 295 0213
 E: WCDev@northrock.bm



• Ground Level - Lobby/Gym/Pool



Rosemont City Place

Relax in space & harmony near the city

BEAUTIFUL CONTEMPORARY KITCHEN UPGRADE OPTION

Now available for purchasers at Rosemont City Place is the option of installing a European designer kitchen. We are pleased to announce that a prototype kitchen has recently been installed in one of the homes.

This newly designed kitchen can be made available if a purchaser wishes to take advantage of this incredible upgrade, offered at only \$40,000. The upgrade includes all new cabinetry, quartz counters, tile backsplash, pendant and cabinetry lighting, stainless steel appliances and all installation costs.

This new option offers a stress-free way to contemporize one of the beautiful Rosemont City Place homes.

If you would like to view the residence with the recently installed kitchen, we would be more than happy to make the viewing arrangements.

Sole Sales Agent
Coldwell Banker Bermuda Realty
Brian Maderios | (441) 247-1801
bmaderios@brcl.bm



GLOBAL
LUXURY

BERMUDA REALTY

*Each office is Independently Owned and Operated.
Coldwell Banker Bermuda Realty is a trade name of
Bermuda Realty Company Limited.*

First Floor

Rosemont City Place

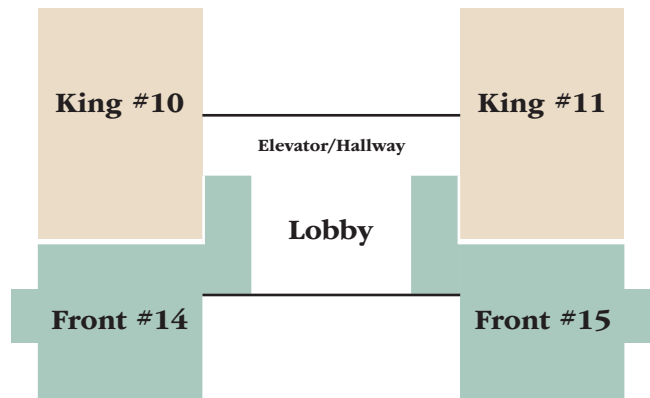
FOR LEASE

King (#10 & #11)

- 2 Bedrooms
- 2 Baths
- Interior: 1,440 Sq. Ft.
- Patio: 435 Sq. Ft.
- Total: 1,875 Sq. Ft.
- Monthly Rent:
Furnished \$6,950

Front (#14 & #15)

- 2 Bedrooms
- 2.5 Baths
- Interior: 1,500 Sq. Ft.
- Patio #14: 540 Sq. Ft.
- Patio #15: 330 Sq. Ft.
- Total #14: 2,040 Sq. Ft.
- Total #15: 1,830 Sq. Ft.
- Monthly Rent:
(14) Furnished - \$6,950
(15) Unfurnished - \$6,450



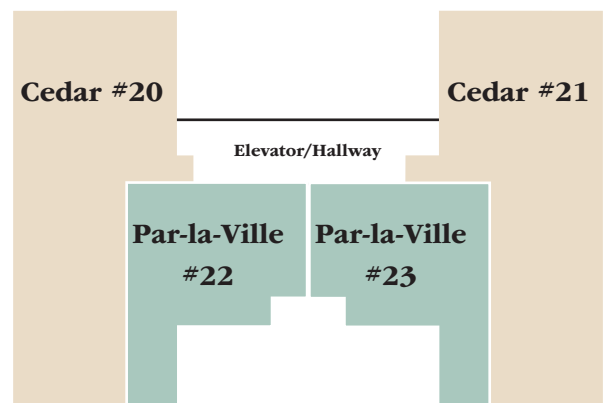
Second Floor

Cedar (#20 & #21)

- 2 Bedrooms
- 2.5 Baths
- Interior: 2,105 Sq. Ft.
- Patio: 435 Sq. Ft.
- Total: 2,540 Sq. Ft.
- Monthly Rent:
(20) Furnished - \$8,350
(21) Unfurnished - \$7,850

Par-la-Ville (#22 & #23)

- 2 Bedrooms
- 2 Baths
- Interior: 1,305 Sq. Ft.
- Patio: 125 Sq. Ft.
- Total: 1,430 Sq. Ft.
- Monthly Rent:
Furnished - \$7,150



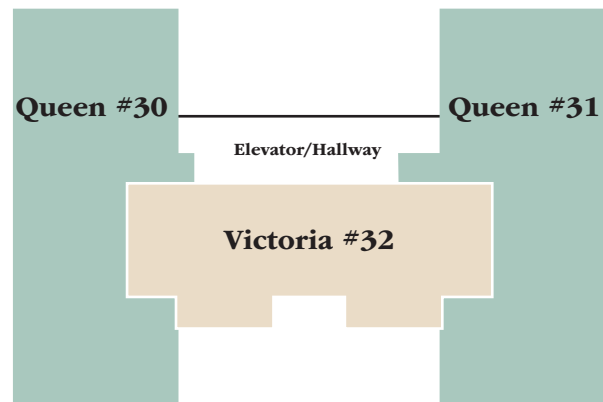
Third Floor

Queen (#30 & #31)

- 3 Bedrooms
- 2.5 Baths
- Interior: 1,985 Sq. Ft.
- Patio: 870 Sq. Ft.
- Total: 2,855 Sq. Ft.
- Monthly Rent:
Unfurnished - \$7,750

Victoria (#32)

- 2 Bedrooms
- Den
- 2.5 Baths
- Interior: 2,055 Sq. Ft.
- Patio: 250 Sq. Ft.
- Total: 2,305 Sq. Ft.
- Monthly Rent:
Furnished - \$8,450



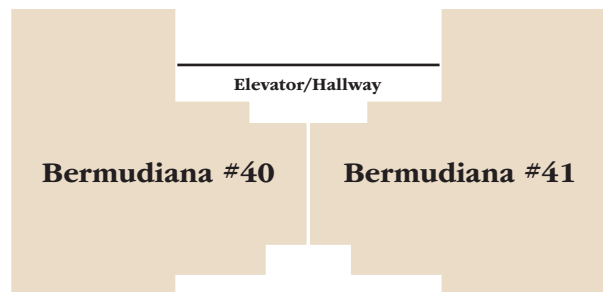
Fourth Floor

Bermudiana (#40)

- 3 Bedrooms
- 2.5 Baths
- Interior: 2,080 Sq. Ft.
- Patio: 1,160 Sq. Ft.
- Total: 3,240 Sq. Ft.
- Monthly Rent:
Furnished - \$9,300

Bermudiana (#41)

- 3 Bedrooms
- 2.5 Baths
- Interior: 2,080 Sq. Ft.
- Patio: 1,160 Sq. Ft.
- Total: 3,240 Sq. Ft.
- Monthly Rent:
Furnished - \$9,300



NOTE All details described in this brochure and inserts are for the guidance of potential purchasers or renters and do not constitute an offer or contract. All details herein are subject to change without notice.

First Floor

Rosemont City Place

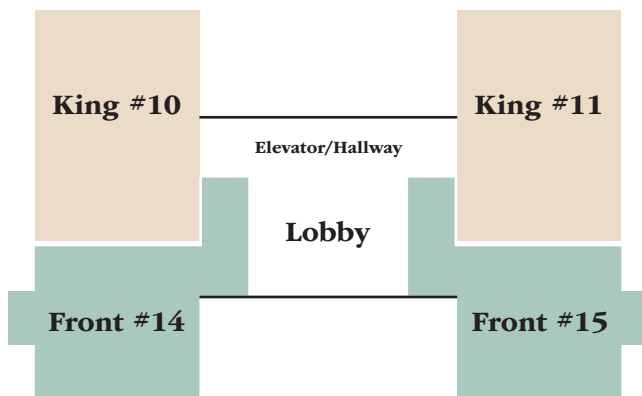
FOR SALE

King (#10 & #11)

- 2 Bedrooms
- 2 Baths
- Interior: 1,440 Sq. Ft.
- Patio: 435 Sq. Ft.
- Total: 1,875 Sq. Ft.
- \$985,000

Front (#14 & #15)

- 2 Bedrooms
- 2.5 Baths
- Interior: 1,500 Sq. Ft.
- Patio #14: 540 Sq. Ft.
- Patio #15: 330 Sq. Ft.
- Total #14: 2,040 Sq. Ft.
- Total #15: 1,830 Sq. Ft.
- \$985,000



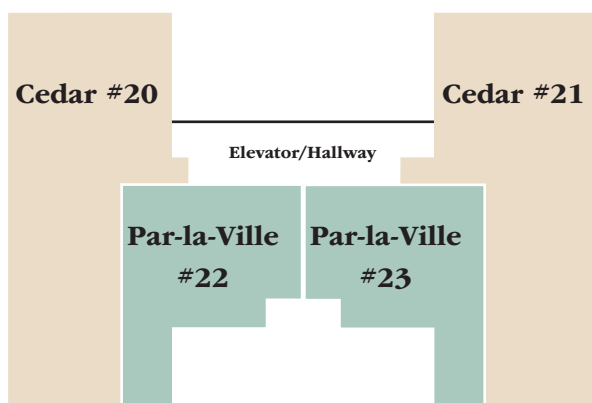
Second Floor

Cedar (#20 & #21)

- 2 Bedrooms
- 2.5 Baths
- Interior: 2,105 Sq. Ft.
- Patio: 435 Sq. Ft.
- Total: 2,540 Sq. Ft.
- #21: \$1,295,000
- #20: \$1,335,000 (Renovated Kitchen)

Par-la-Ville (#22 & #23)

- 2 Bedrooms
- 2 Baths
- Interior: 1,305 Sq. Ft.
- Patio: 125 Sq. Ft.
- Total: 1,430 Sq. Ft.
- \$995,000



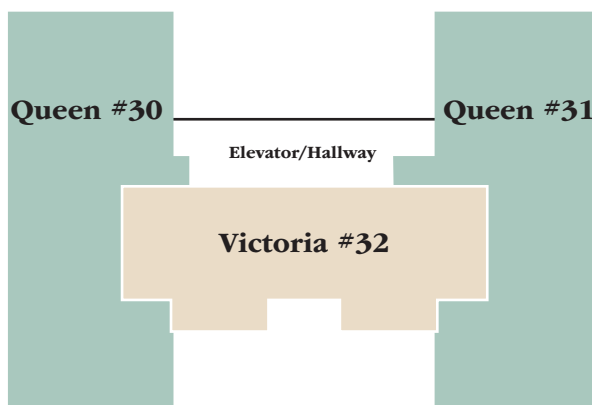
Third Floor

Queen (#30 & #31)

- 3 Bedrooms
- 2.5 Baths
- Interior: 1,985 Sq. Ft.
- Patio: 870 Sq. Ft.
- Total: 2,855 Sq. Ft.
- \$1,350,000

Victoria (#32)

- 2 Bedrooms
- Den
- 2.5 Baths
- Interior: 2,055 Sq. Ft.
- Patio: 250 Sq. Ft.
- Total: 2,305 Sq. Ft.
- SOLD



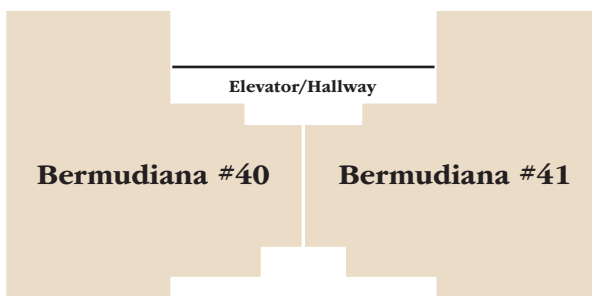
Fourth Floor

Bermudiana (#40)

- 3 Bedrooms
- 2.5 Baths
- Interior: 2,080 Sq. Ft.
- Patio: 1,160 Sq. Ft.
- Total: 3,240 Sq. Ft.
- \$1,495,000

Bermudiana (#41)

- 3 Bedrooms
- 2.5 Baths
- Interior: 2,080 Sq. Ft.
- Patio: 1,160 Sq. Ft.
- Total: 3,240 Sq. Ft.
- \$1,495,000



ASSIGNED PARKING SPOT \$30,000 RENOVATED KITCHEN \$40,000 PRIVATE STORAGE ROOM \$10,000

Sole Sales Agent

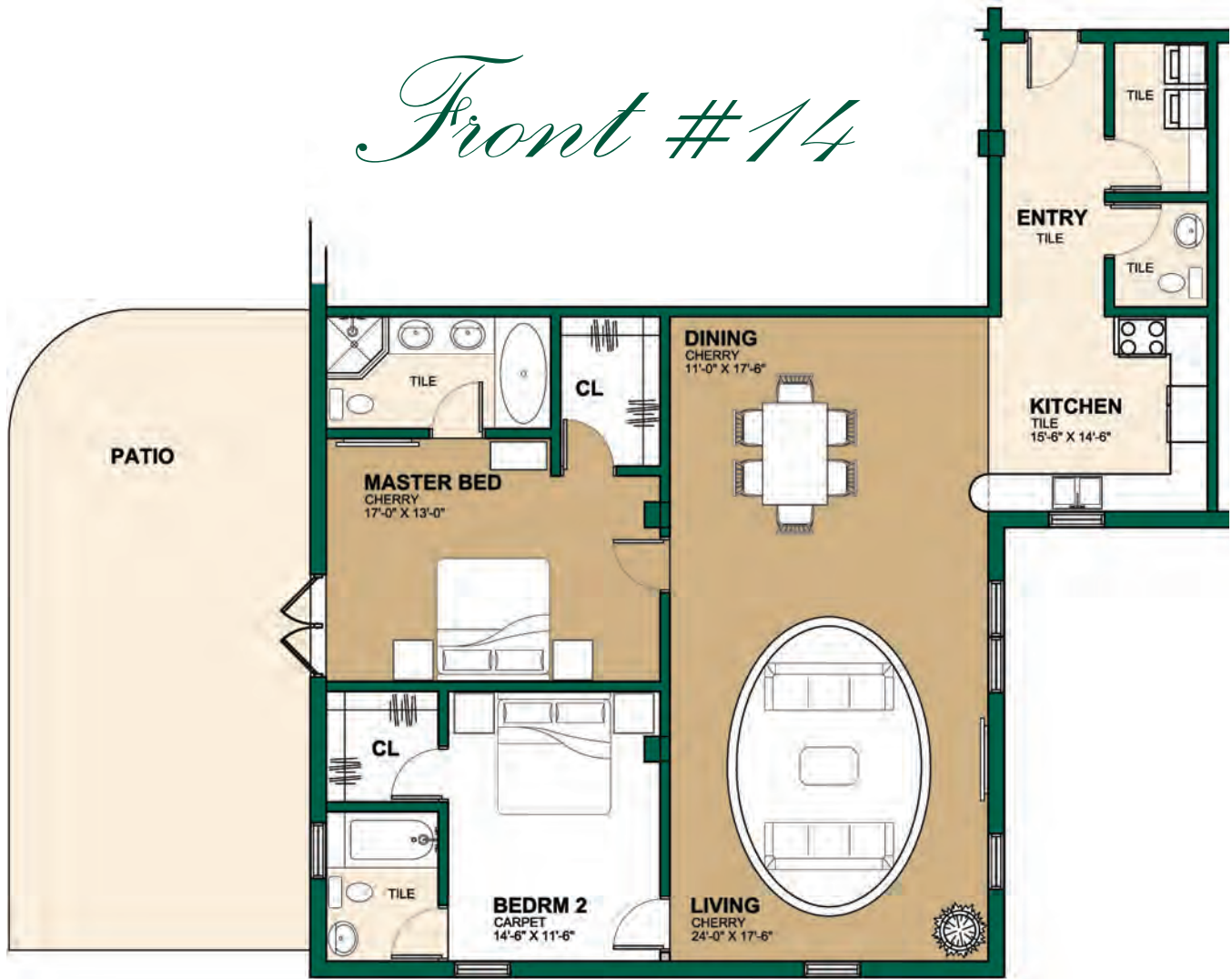
Coldwell Banker Bermuda Realty

Brian Madeiros - (441) 247 1801 - bmadeiros@brcl.bm



NOTE All details described in this brochure and inserts are for the guidance of potential purchasers or renters and do not constitute an offer or contract. All details herein are subject to change without notice.

Front #14



Rosemont City Place

It's not just an apartment;
it's a full size home

20 Rosemont Ave.

Front #14

2 Bedrooms

2.5 Baths

Interior:..... 1,500 Sq. Ft.

Patio:..... 540 Sq. Ft.

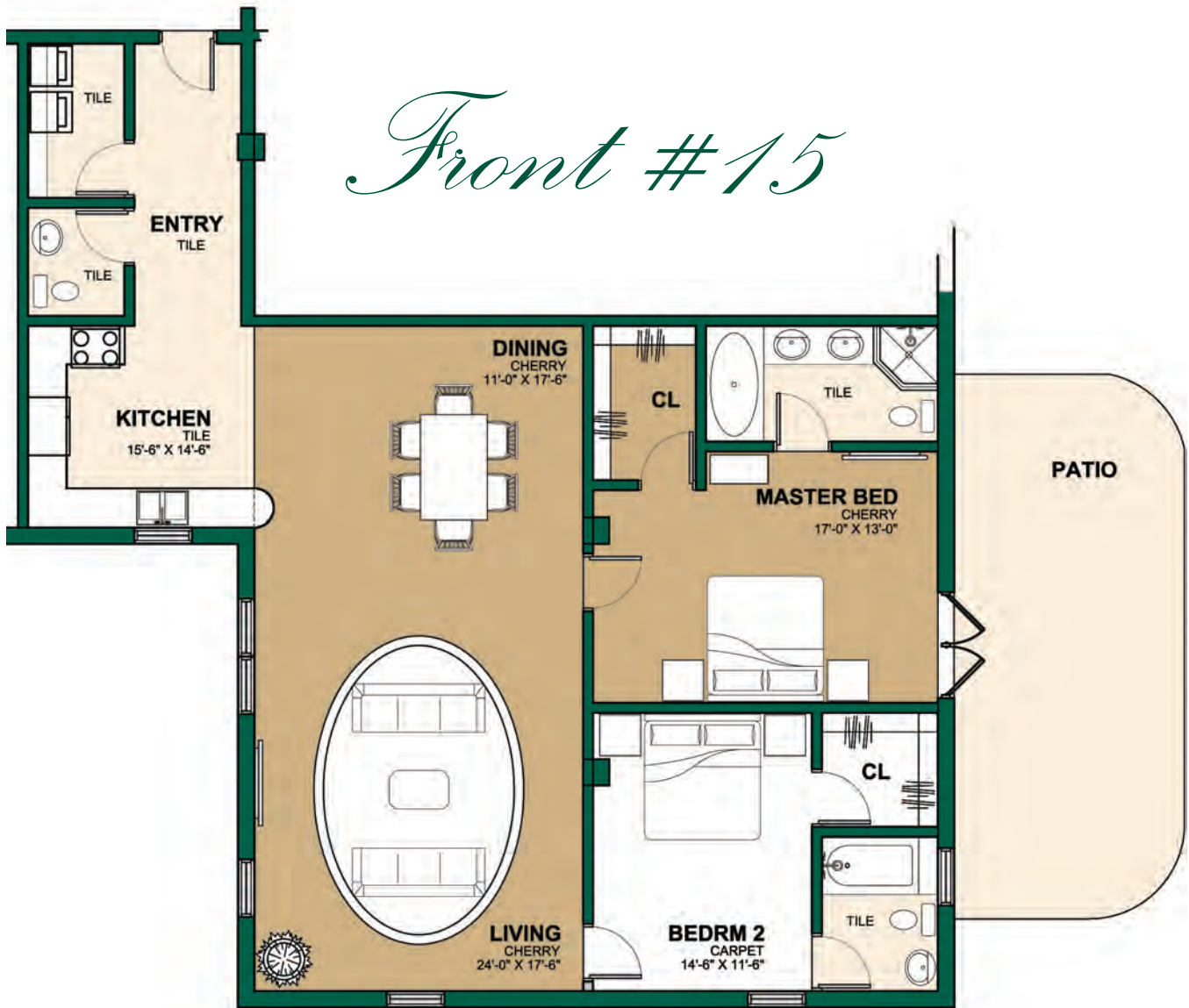
Total:..... 2,040 Sq. Ft.

NOTE: Cedar #20 has renovated kitchen

NOTE: Plans are not to scale. Furniture for illustrative purposes only. All layouts are subject to change. All details described in this brochure and inserts are for the guidance of potential purchasers or renters and do not constitute an offer or contract. All details herein are subject to change without notice.

- Floor Plan (#14)

Front #15



Rosemont City Place

It's not just an apartment;
it's a full size home

20 Rosemont Ave.

Front #15

2 Bedrooms

2.5 Baths

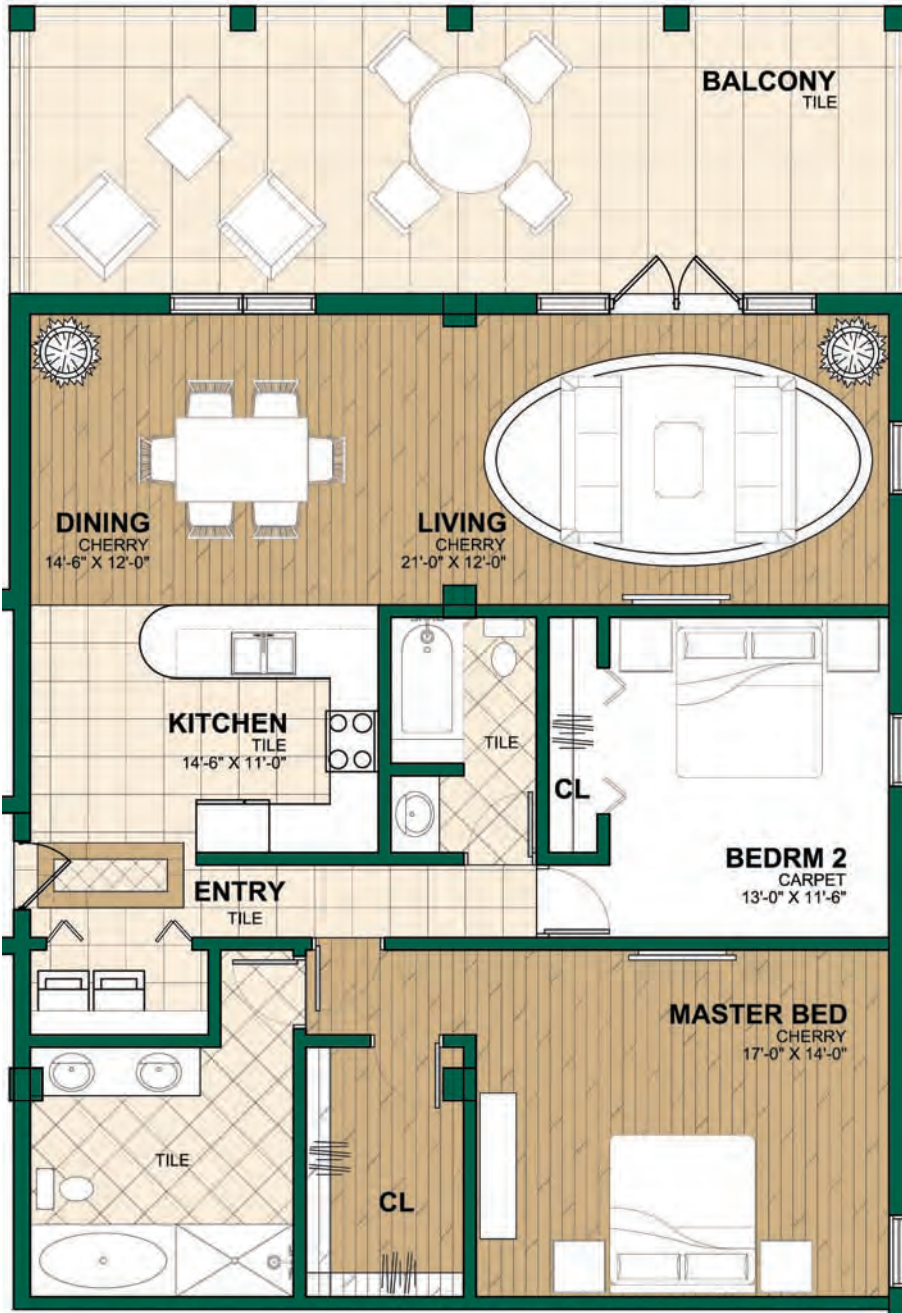
Interior:..... 1,500 Sq. Ft.

Patio:..... 330 Sq. Ft.

Total:..... 1,830 Sq. Ft.

NOTE: Plans are not to scale. Furniture for illustrative purposes only. All layouts are subject to change. All details described in this brochure and inserts are for the guidance of potential purchasers or renters and do not constitute an offer or contract. All details herein are subject to change without notice.

• Floor Plan (#15)



King #10 & #11

Rosemont City Place

It's not just an apartment;
it's a full size home

20 Rosemont Ave.

King #10 & #11

2 Bedroom

2 Baths

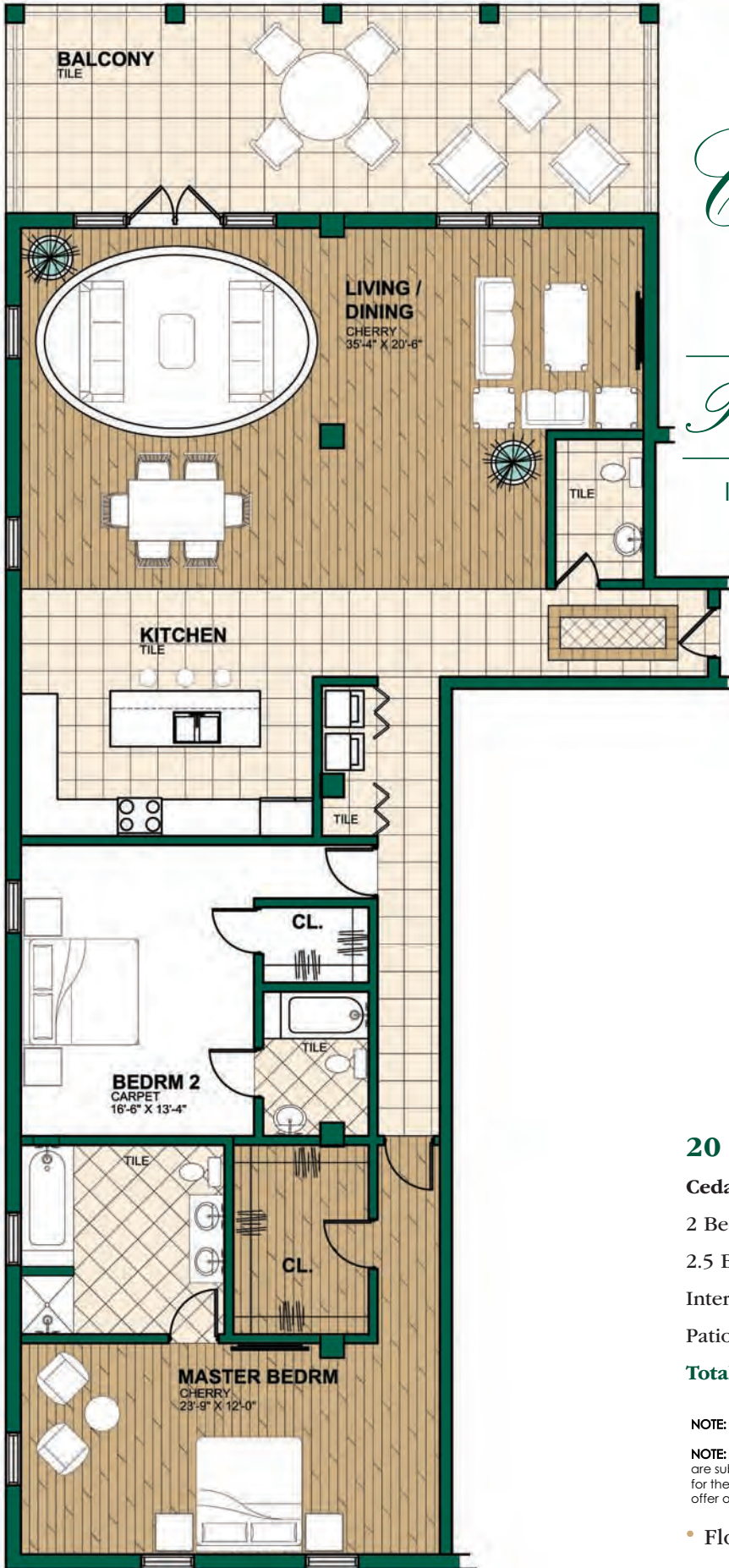
Interior:.....1,440 Sq. Ft.

Patio:..... 435 Sq. Ft.

Total:..... 1,875 Sq. Ft.

NOTE: Plans are not to scale. Furniture for illustrative purposes only. All layouts are subject to change. All details described in this brochure and inserts are for the guidance of potential purchasers or renters and do not constitute an offer or contract. All details herein are subject to change without notice.

• Floor Plan (# 10 & 11)



Cedar #20 & #21

Rosemont City Place

It's not just an apartment;
it's a full size home

20 Rosemont Ave.

Cedar #20 & #21

2 Bedrooms

2.5 Baths

Interior:..... 2,105 Sq. Ft.

Patio:..... 435 Sq. Ft.

Total:..... 2,540 Sq. Ft.

NOTE: Cedar #20 has renovated kitchen.

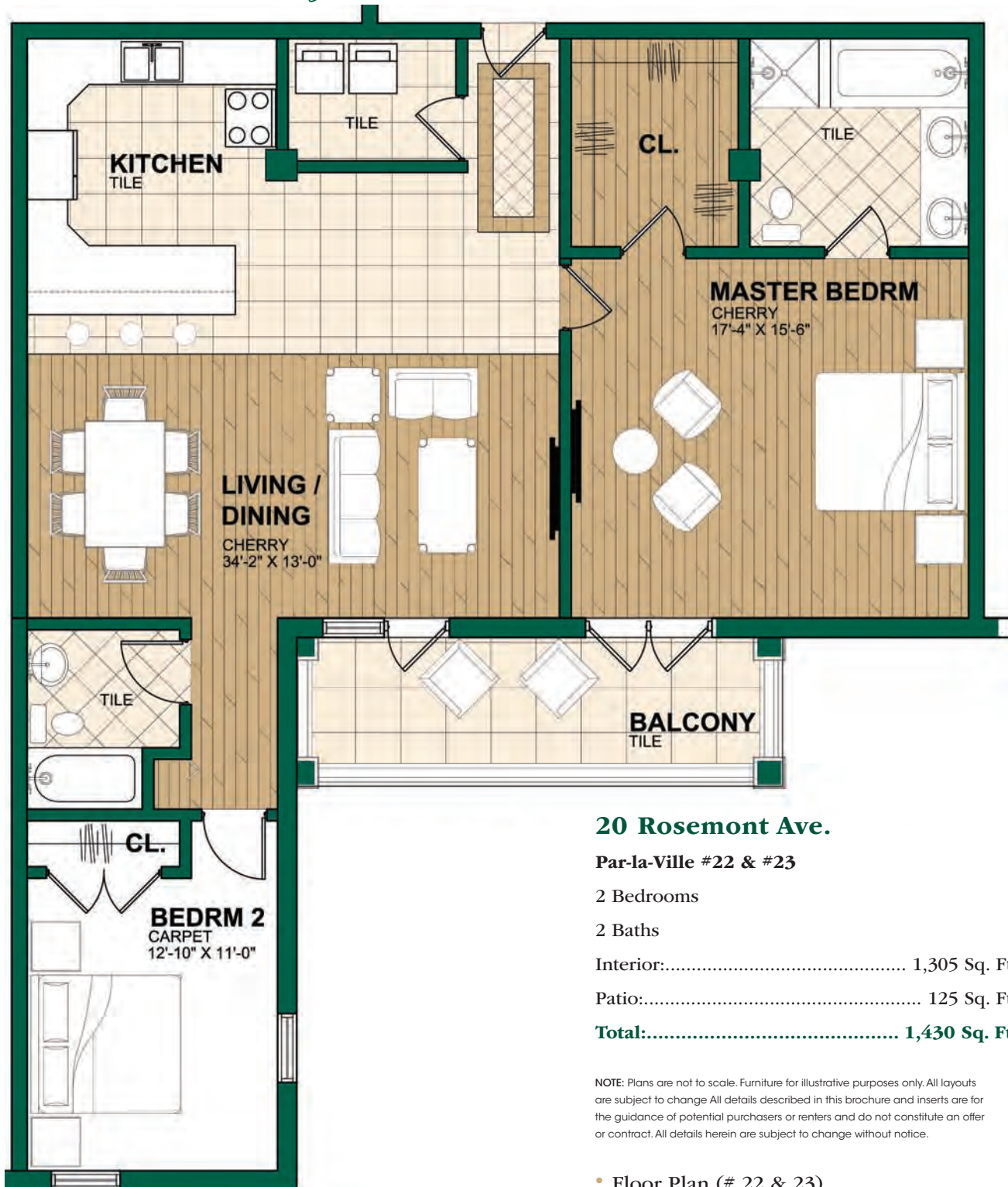
NOTE: Plans are not to scale. Furniture for illustrative purposes only. All layouts are subject to change. All details described in this brochure and inserts are for the guidance of potential purchasers or renters and do not constitute an offer or contract. All details herein are subject to change without notice.

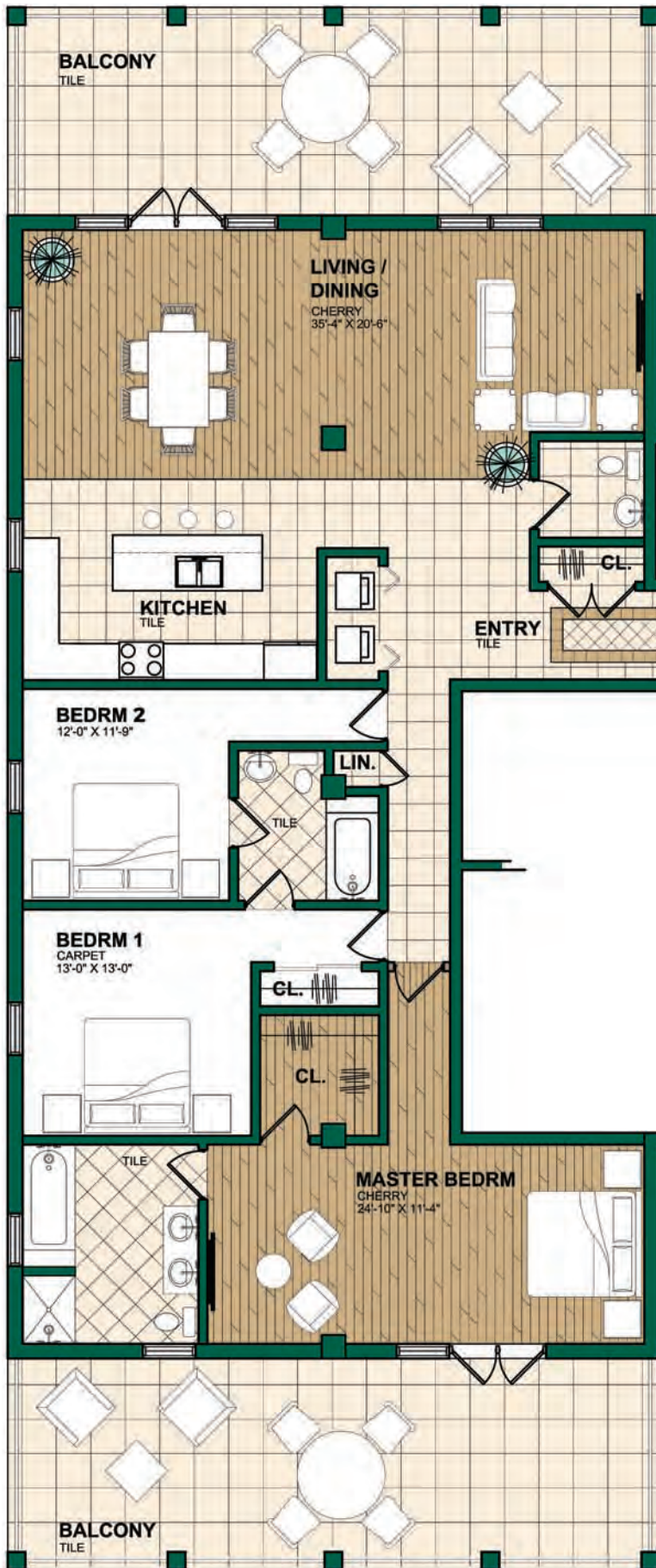
- Floor Plan (# 20 & 21)

Par-la-Ville #22 & #23

Rosemont City Place

It's not just an apartment;
it's a full size home





Queen #30 & #31

Rosemont City Place

It's not just an apartment;
it's a full size home

20 Rosemont Ave.

Queen #30

3 Bedrooms

2.5 Baths

Wood tile in Living/Dining & all Bedrooms

Interior:..... 1,985 Sq. Ft.

Patio:..... 870 Sq. Ft.

Total:..... 2,855 Sq. Ft.

20 Rosemont Ave.

Queen #31

3 Bedrooms

2.5 Baths

Carpet in Bedroom 1 & 2

Interior:..... 1,985 Sq. Ft.

Patio:..... 870 Sq. Ft.

Total:..... 2,855 Sq. Ft.

NOTE: Plans are not to scale. Furniture for illustrative purposes only. All layouts are subject to change. All details described in this brochure and inserts are for the guidance of potential purchasers or renters and do not constitute an offer or contract. All details herein are subject to change without notice.

• Floor Plan (# 30 & 31)

Victoria #32

Rosemont City Place

It's not just an apartment;
it's a full size home



20 Rosemont Ave.

Victoria #32

2 Bedrooms

Den

2.5 Baths

Interior:..... 2,055 Sq. Ft.

Patio:.....250 Sq. Ft.

Total:..... 2,305 Sq. Ft.

NOTE: Plans are not to scale. Furniture for illustrative purposes only. All layouts are subject to change. All details described in this brochure and inserts are for the guidance of potential purchasers or renters and do not constitute an offer or contract. All details herein are subject to change without notice.

• Floor Plan (# 32)

Bermudiana #40 & #41

Rosemont City Place

It's not just an apartment;
it's a full size home

20 Rosemont Ave.

Bermudiana #40

3 Bedrooms

2.5 Baths

Wood tile in Living/Dining, Master Closet & Bedrooms

Interior:..... 2,080 Sq. Ft.

Patio:..... 1,160 Sq. Ft.

Total:..... 3,240 Sq. Ft.

20 Rosemont Ave.

Bermudiana #41

3 Bedrooms

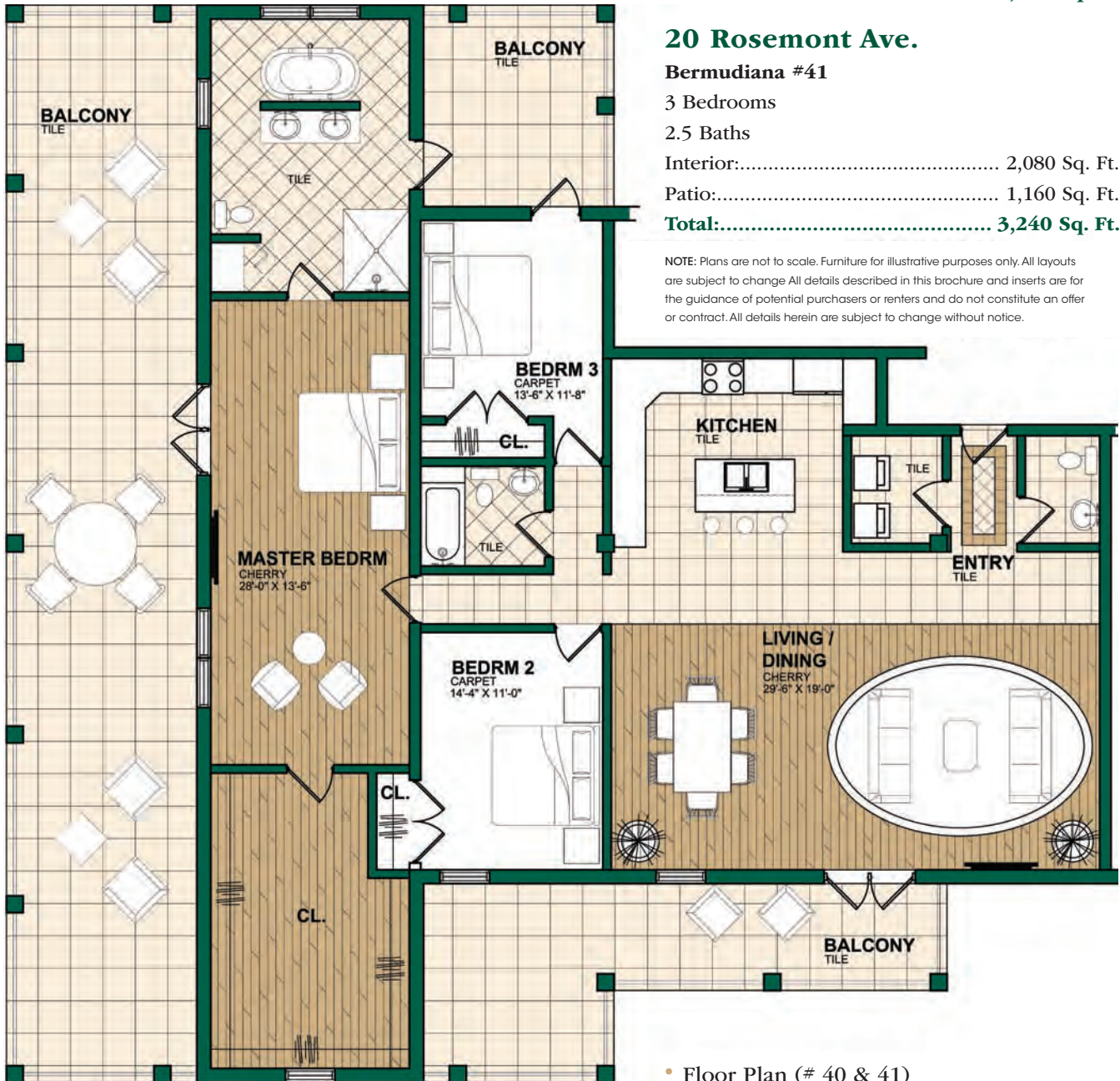
2.5 Baths

Interior:..... 2,080 Sq. Ft.

Patio:..... 1,160 Sq. Ft.

Total:..... 3,240 Sq. Ft.

NOTE: Plans are not to scale. Furniture for illustrative purposes only. All layouts are subject to change. All details described in this brochure and inserts are for the guidance of potential purchasers or renters and do not constitute an offer or contract. All details herein are subject to change without notice.



• Floor Plan (# 40 & 41)